

RIVAL SERIES



## ALS-SLZ

All in one solar street light

CE (RoHS) P66 IK10

# INTRODUCTION

01 PART ONE  
**PRODUCT ADVANTAGE**

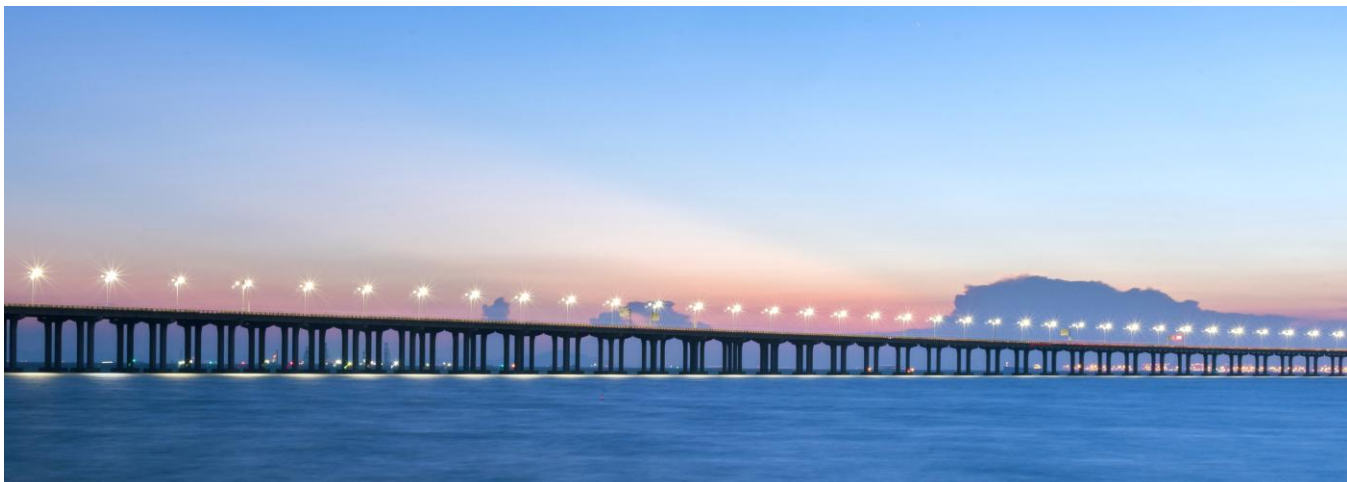
02 PART TWO  
**SPECIFICATIONS**

03 PART THREE  
**EXPLODED VIEW**

04 PART FOUR  
**PRODUCT DETAIL**

05 PART FIVE  
**OPTICAL FEATURE**

06 PART SIX  
**DIMENSION FIGURE**



# 01 PART ONE PRODUCT ADVANTAGE



## Product Advantage

### MAINSTREAM INTEGRATED STRUCTURE DESIGN

Saving transportation cost.  
Easy to install and convenient  
for maintenance.

### DIE-CAST ALUMINUM BRACKET

High mechanical strength,  
anti-wind resistance of Level-16.



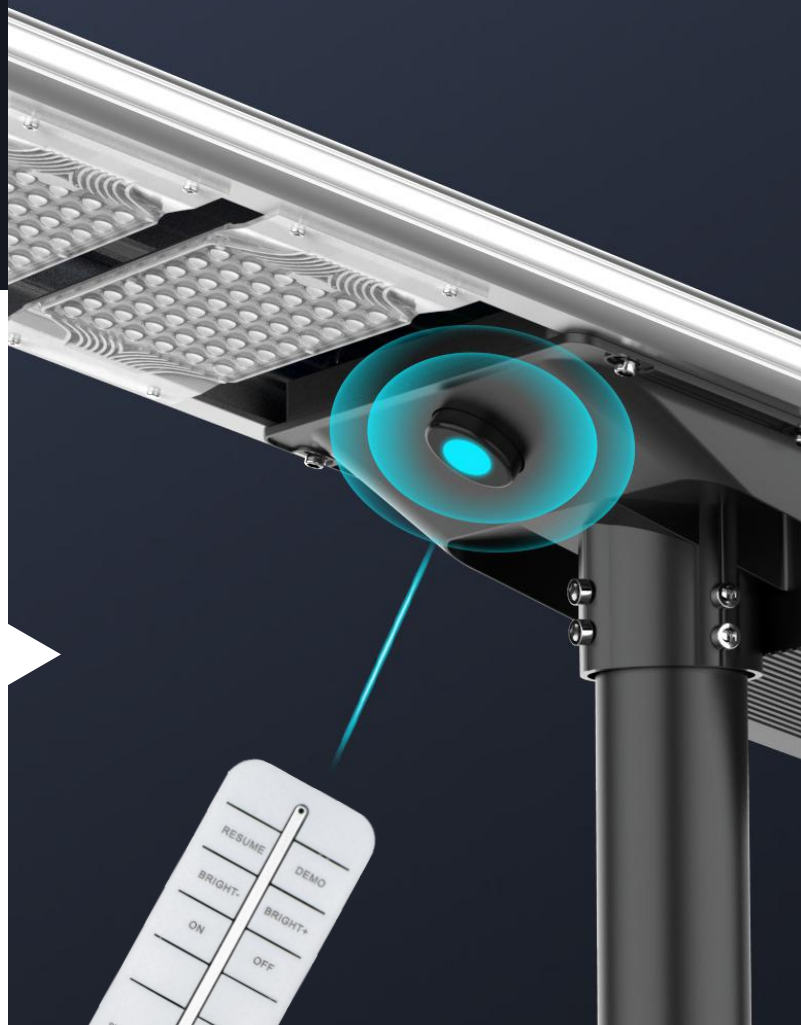


**Enlarge**  
LED Module

3030 LED chip

## HIGH POWER

Enlarged capacity LED module design, equipped with high-brightness Bridgelux LED chips, improving the brightness by 30%.



## REMOTE CONTROL

Three lighting modes for choice, flexible to switch via remote control.

Product Advantage

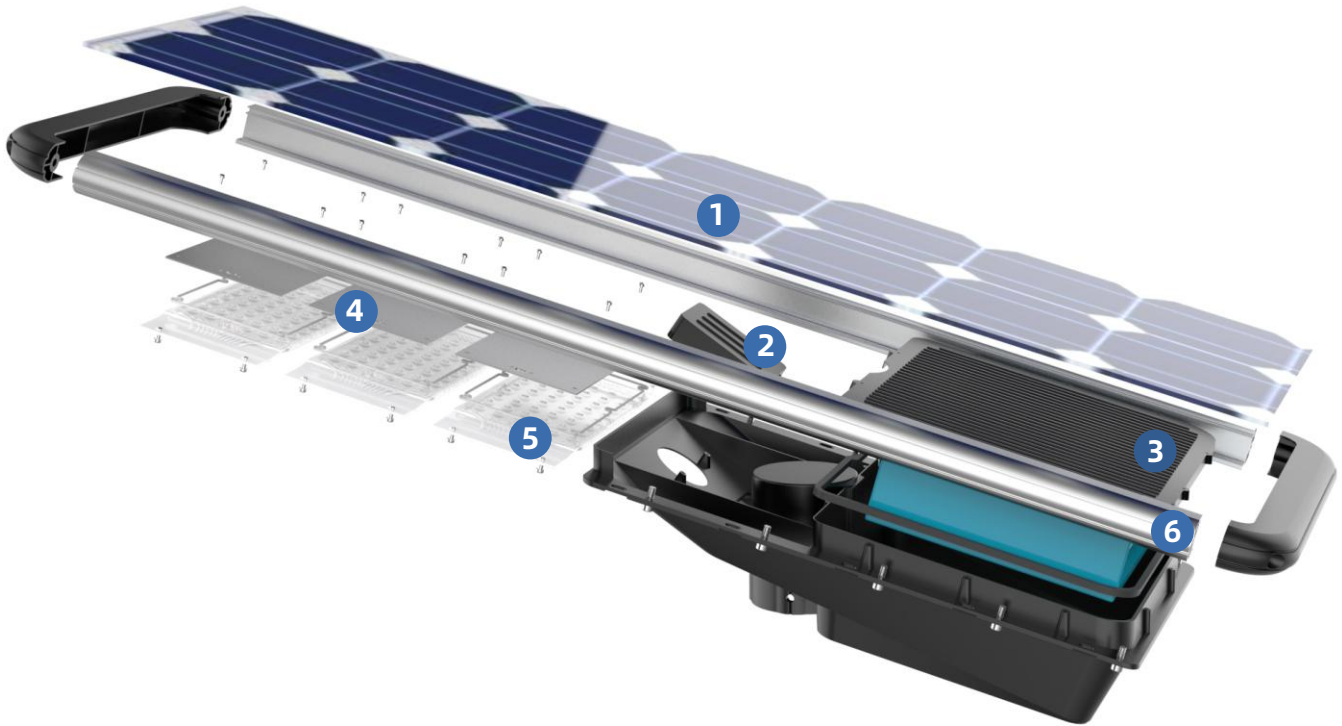
# 02 PART TWO SPECIFICATION

Model	ALS-SLZ					
Power	40W	50W	60W	80W	100W	120W
LED	96pcs	144pcs	144pcs	240pcs	336pcs	336pcs
Luminous	210 lm/w					
LiFePO4 Battery	12.8V/28AH	12.8V/36AH	12.8V/42AH	12.8V/57AH	12.8V/63AH	12.8V/72AH
Mono Solar Panel	18V/65W	18V/70W	18V/80W	18V/100W	18V/130W	18V/140W
Solar Charging Time	6-8 hours by bright sunlight					
Lighting Time In Rainy Day	7-10 days					
Lighting Mode	12hrs motion sensor control (Bright lighting 30secs when people move through the light) + Remote Controller					
PIR	120°, >8m					
Material Work	Aluminium alloy + PMMA					
IP/IK Class	IP66 / IK 10					
Temperature	-25°C to 65°C					

## Full Range of Six Products

The first choice for  
engineering lighting





1 Mono Solar Panel

2 Control Module

3 LifePo4 Battery

4 LED Plate

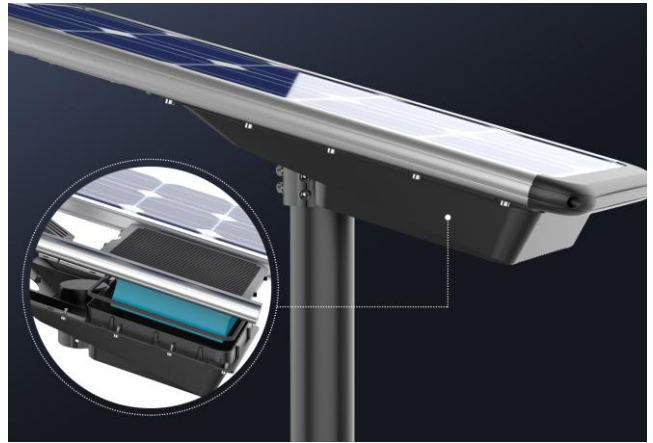
5 Optical Len

6 Die-cast Aluminum Bracket

01

## LifePo4 Battery

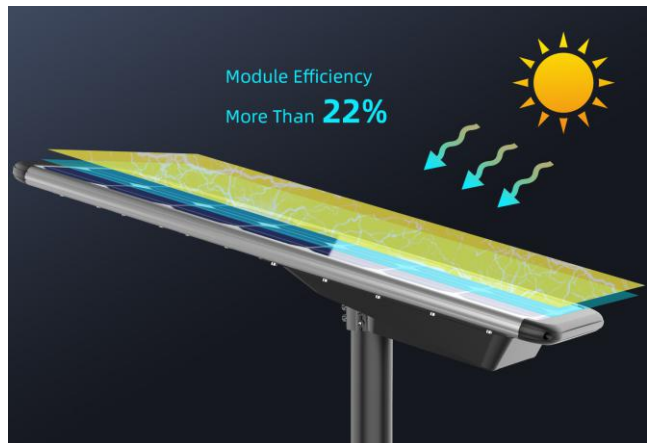
Brand new and big capacity



02

## Mono Solar Panel

22% photoelectric conversion efficiency



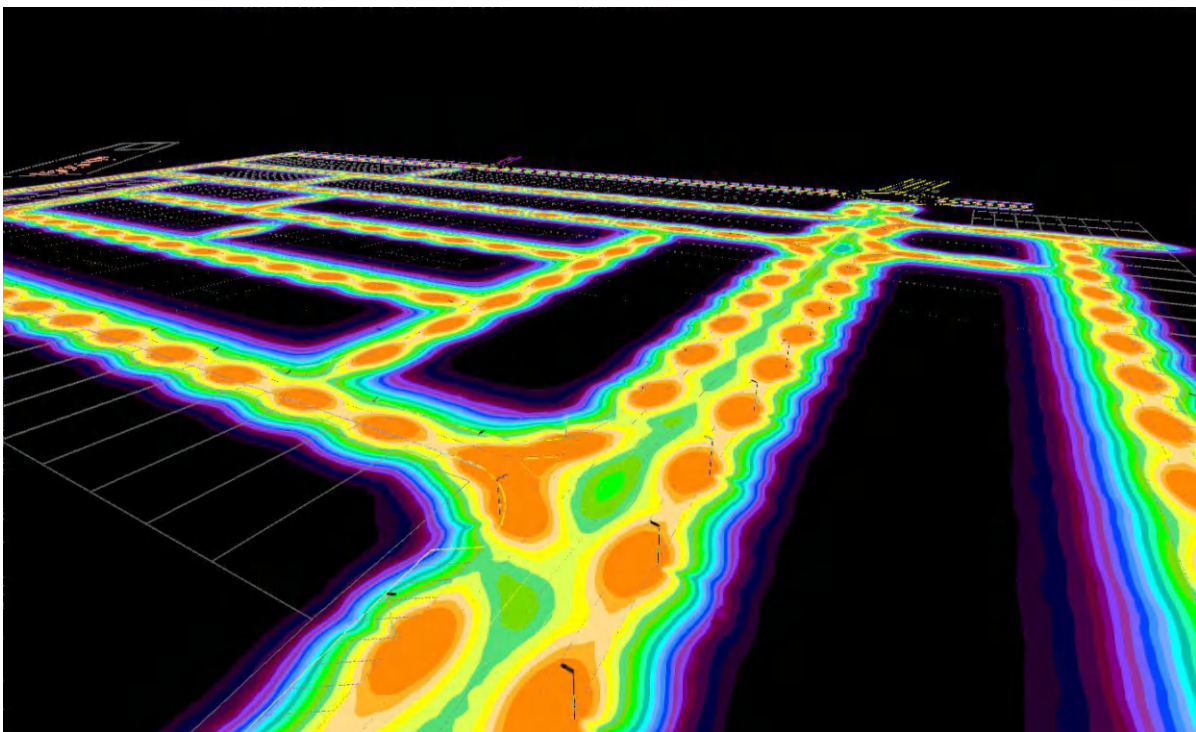
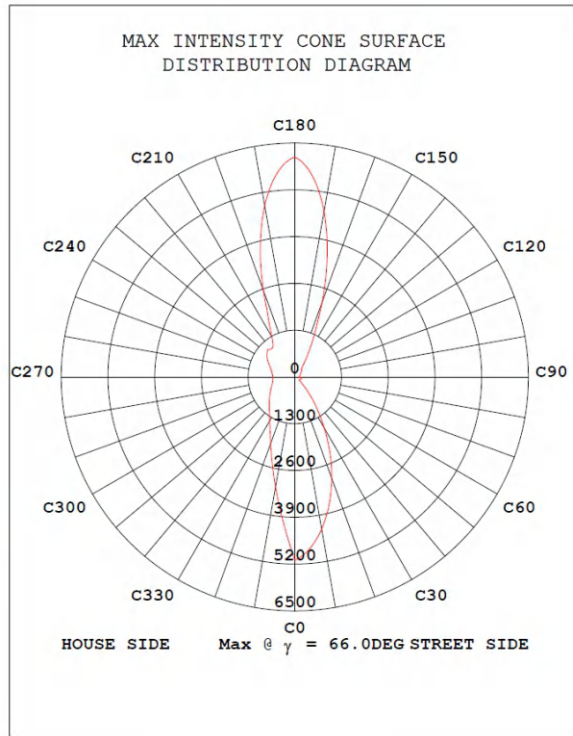
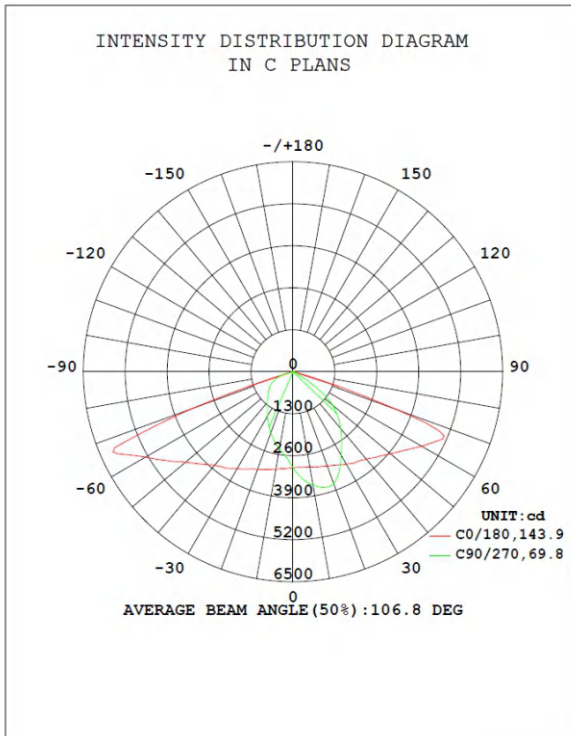
03

## PIR Sensor

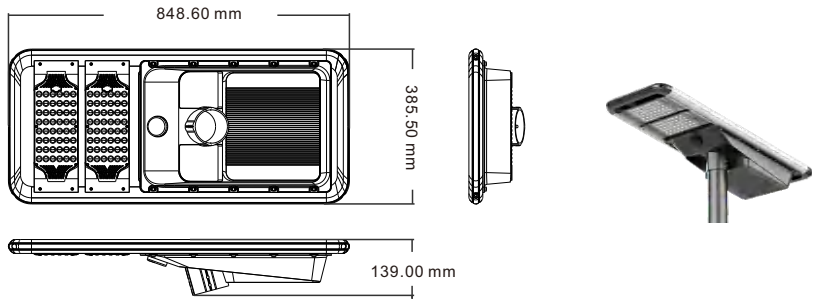
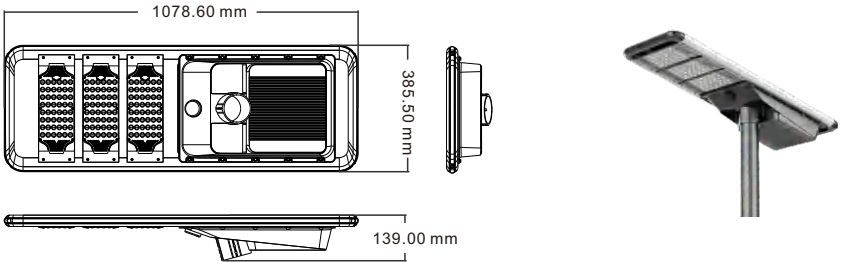
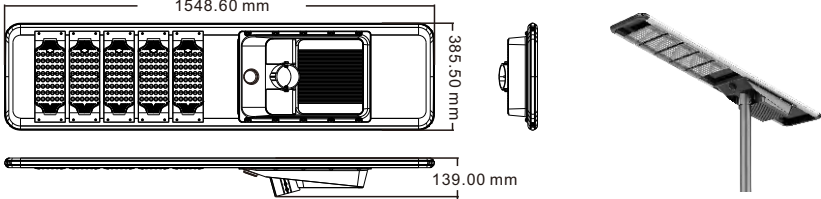
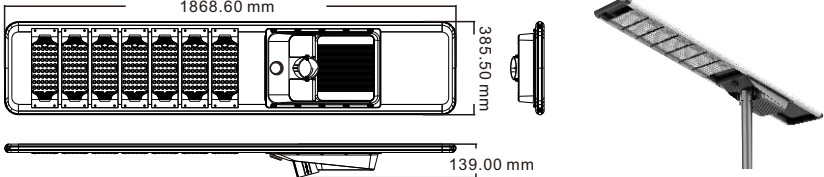
More than 8m sensing distance







**PART SIX | DIMENSION FIGURE**

Item No.	Solar Street Light Size
<p><b>ALS-SLZ-40W</b> 848.60x385.50x139.00mm</p>	
<p><b>ALS-SLZ-50W/60W</b> 1078.60x385.50x139.00mm</p>	
<p><b>ALS-SLZ-80W</b> 1548.60x385.50x139.00mm</p>	
<p><b>ALS-SLZ-100W/120W</b> 1868.60x385.50x139.00mm</p>	

S T R E E T / L I G H T



**AFFARI**  
Lighting Solutions

[info@affarilighting.com](mailto:info@affarilighting.com)

[www.affarilighting.com](http://www.affarilighting.com)